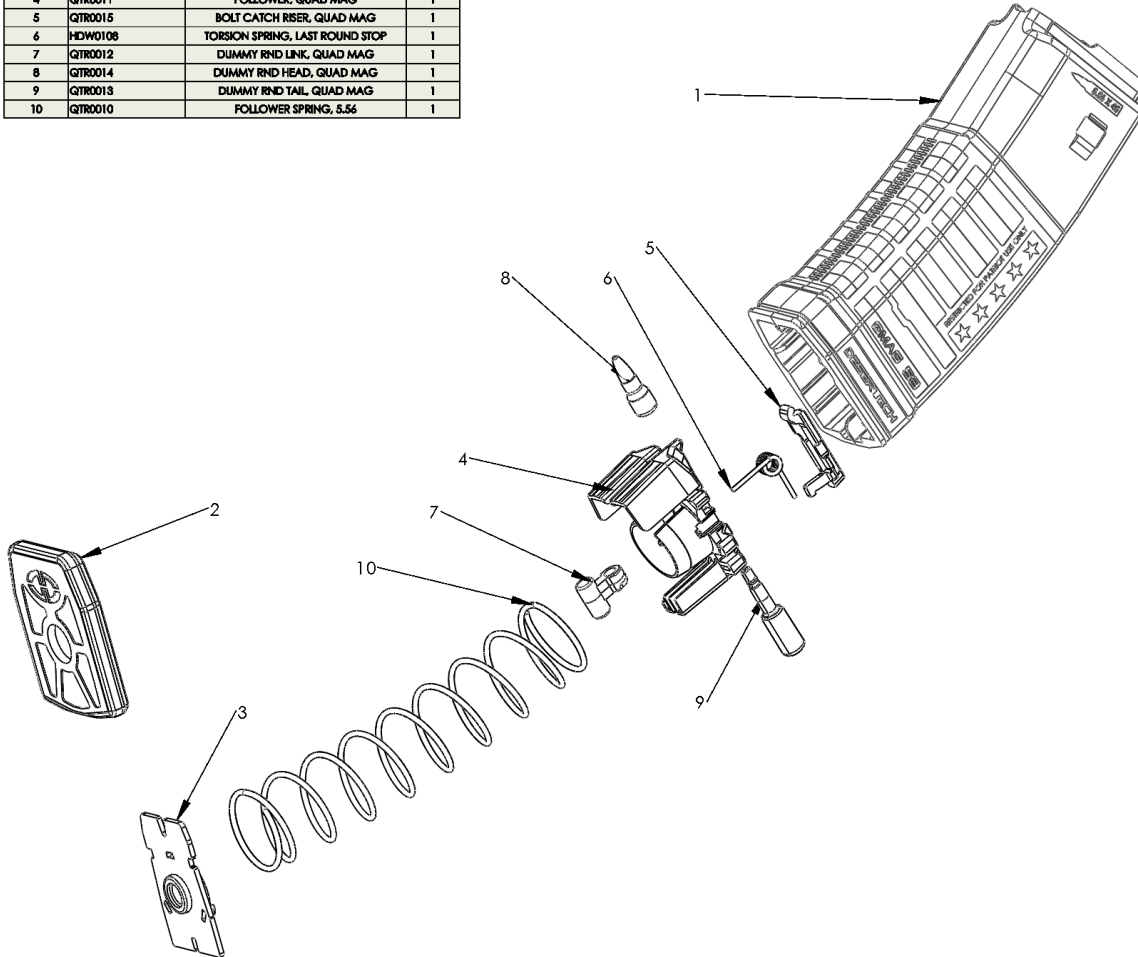


Quattro Magazine Assembly

Quad Magazine (QTR-MG-B53)

(For Quad Magazine Assembly, 49 Round (QTR-MG-B49) substitute Body QTR0016 with QTR0017 and Floor Plate QTR0009 with QTR0018.)

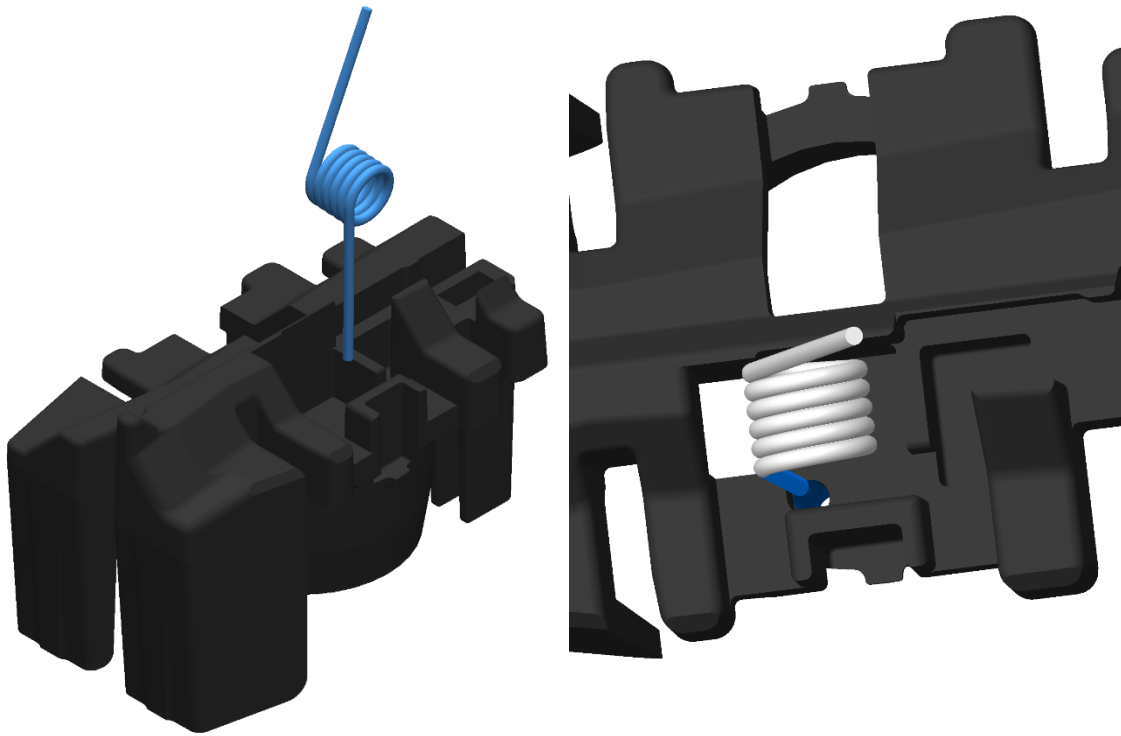
ITEM NO.	PART NUMBER	DESCRIPTION	QTY.
1	QTR0016	MAG BODY 53, QUAD MAG	1
2	QTR0008	BASE PLATE, QUAD MAG	1
3	QTR0009	FLOOR PLATE, QUAD MAG, 53 ROUNDS	1
4	QTR0011	FOLLOWER, QUAD MAG	1
5	QTR0015	BOLT CATCH RISER, QUAD MAG	1
6	HW0108	TORSION SPRING, LAST ROUND STOP	1
7	QTR0012	DUMMY RND LINK, QUAD MAG	1
8	QTR0014	DUMMY RND HEAD, QUAD MAG	1
9	QTR0013	DUMMY RND TAIL, QUAD MAG	1
10	QTR0010	FOLLOWER SPRING, 5.56	1



Quad Magazine Follower QTR0019 (QTR0010, QTR0011, QTR0012, QTR0013, QTR0014, QTR0015)

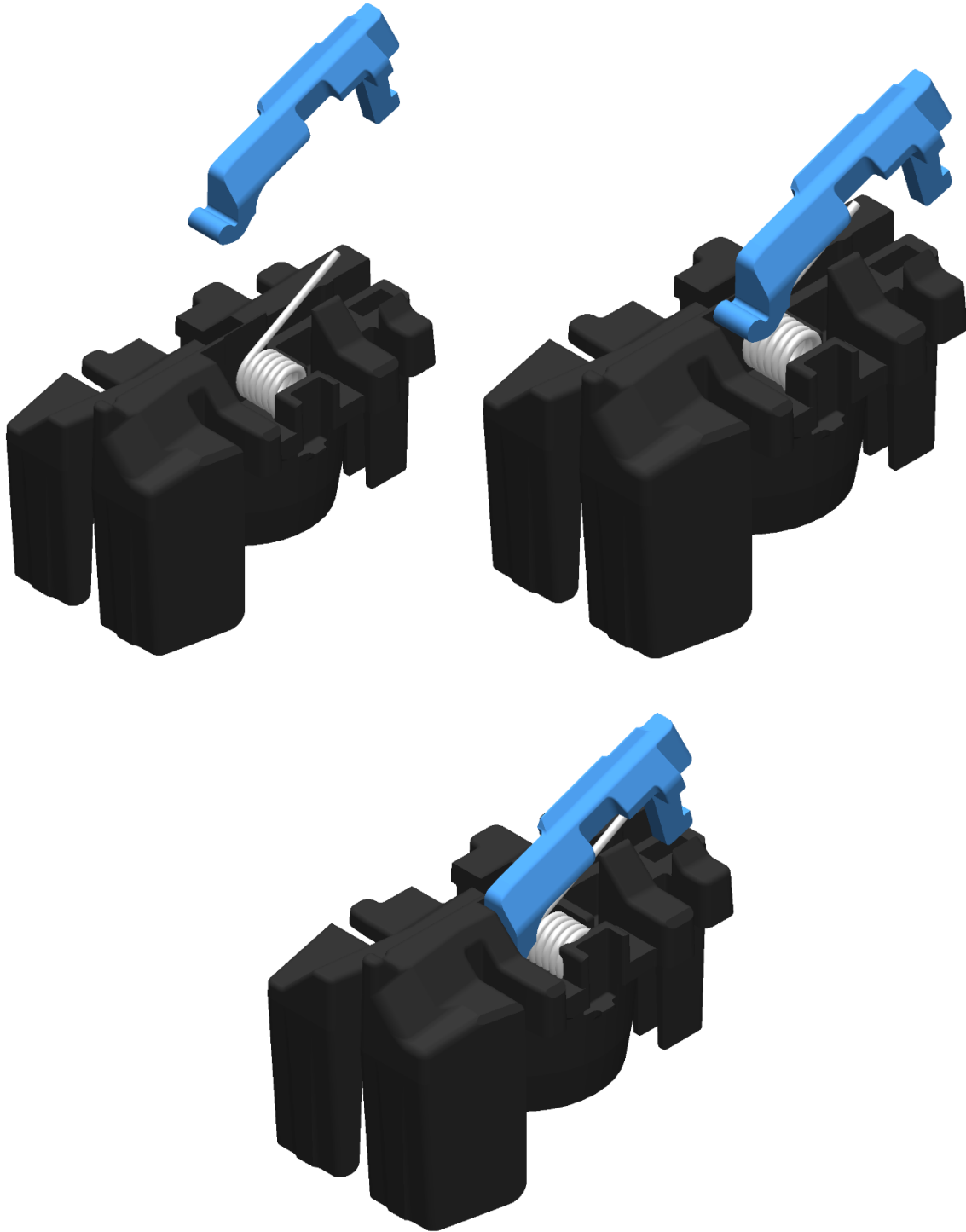
Quattro Magazine Assembly

1. Insert the torsion spring HDW0106 into the follower QTR0011 by inserting a leg into the hole with the barrel of the spring in the cavity.



Quattro Magazine Assembly

2. Hook the lifter QTR0015 into the corresponding cut out in the follower and place the other leg of the spring HDW0106 in the groove of the cut out. The spring will be semi compress and will need to be guide.



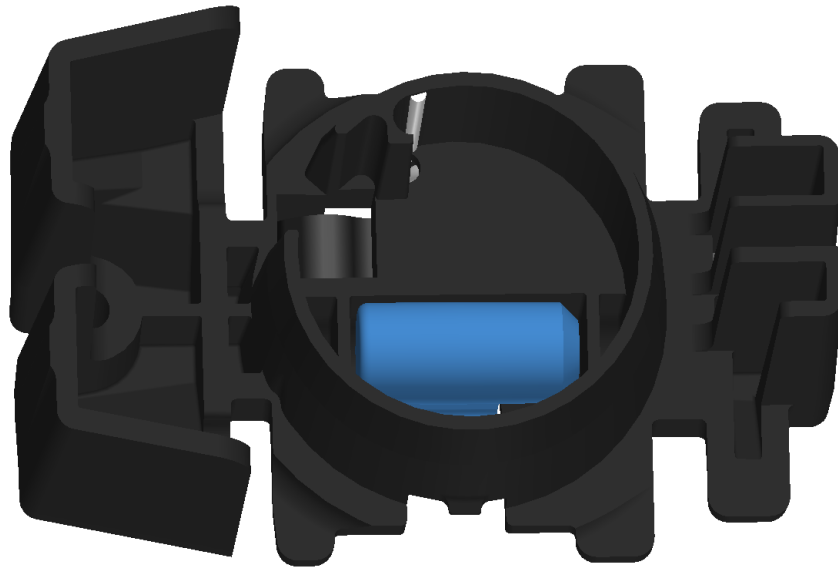
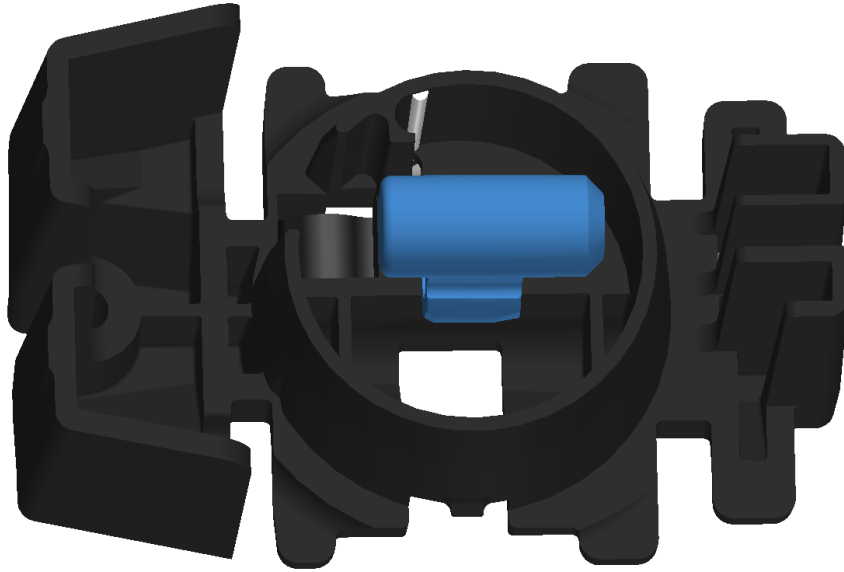
Quattro Magazine Assembly

3. Push down on the riser QTR0015 until the leg of the riser engages the follower and verify the the riser moves completely down with no resistance once engaged. It is important that the spring is not bound to ensure proper functionality.



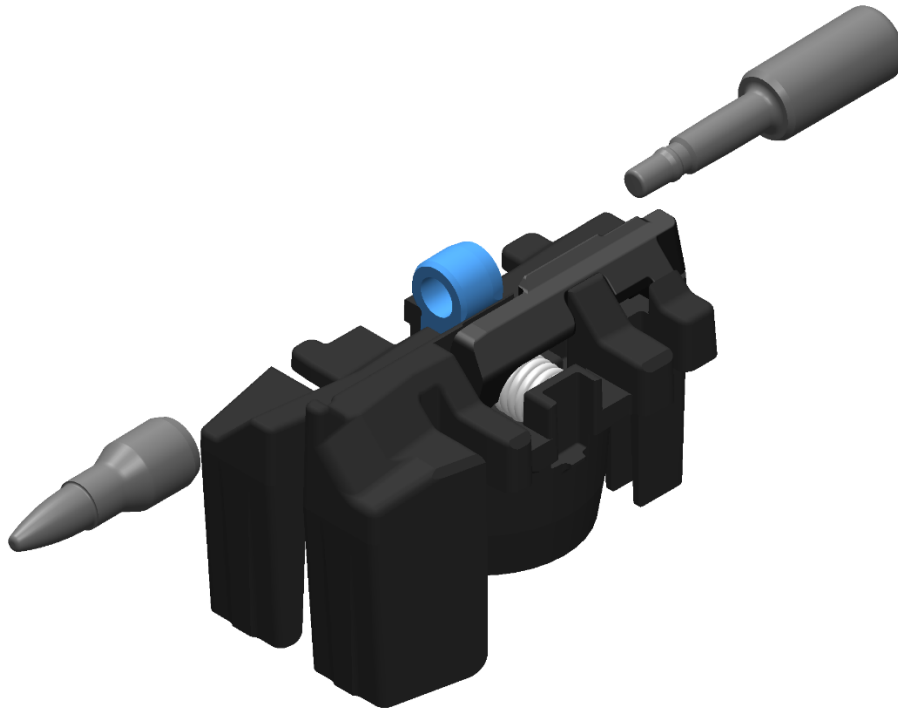
Quattro Magazine Assembly

4. Insert the link QTR0012 from the bottom of the follower as shown. The link will only go in one way.

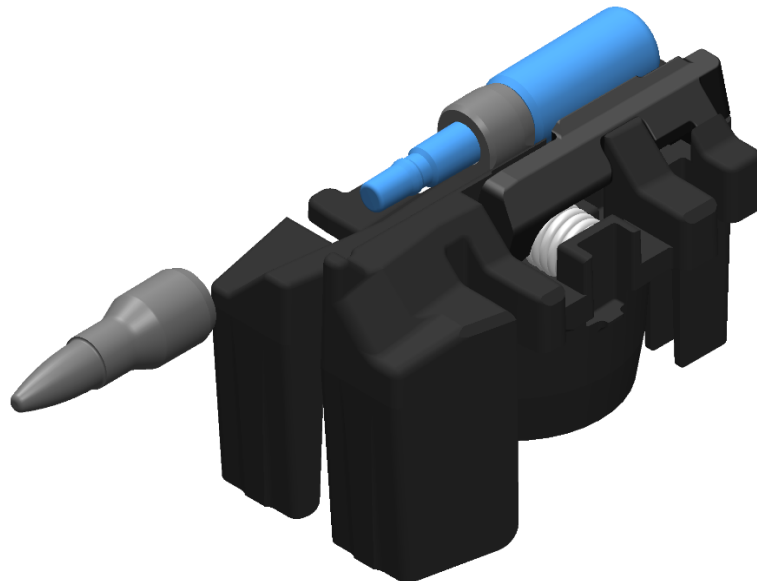


Quattro Magazine Assembly

5. Reorient the follower while holding the link in place.

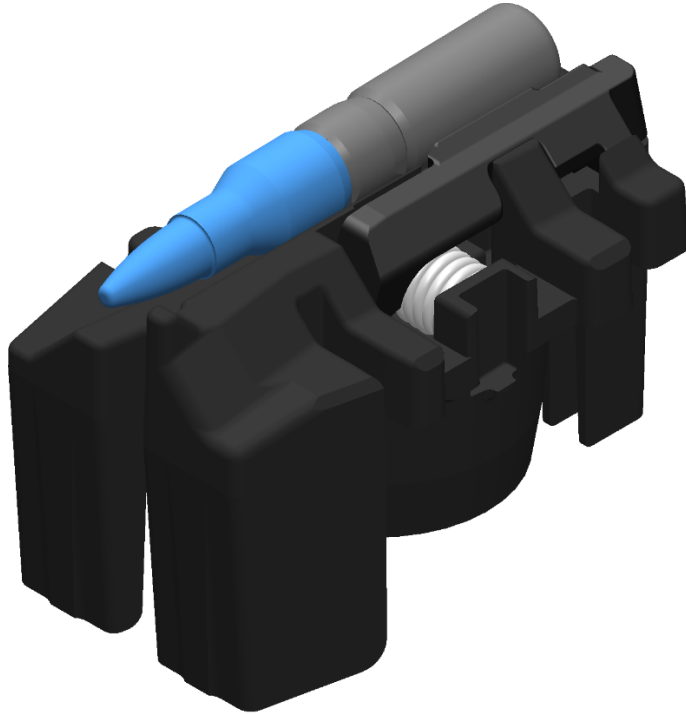


6. Insert the tail QTR0013 into the link. Verify the tail is oriented to the back of the follower as shown.

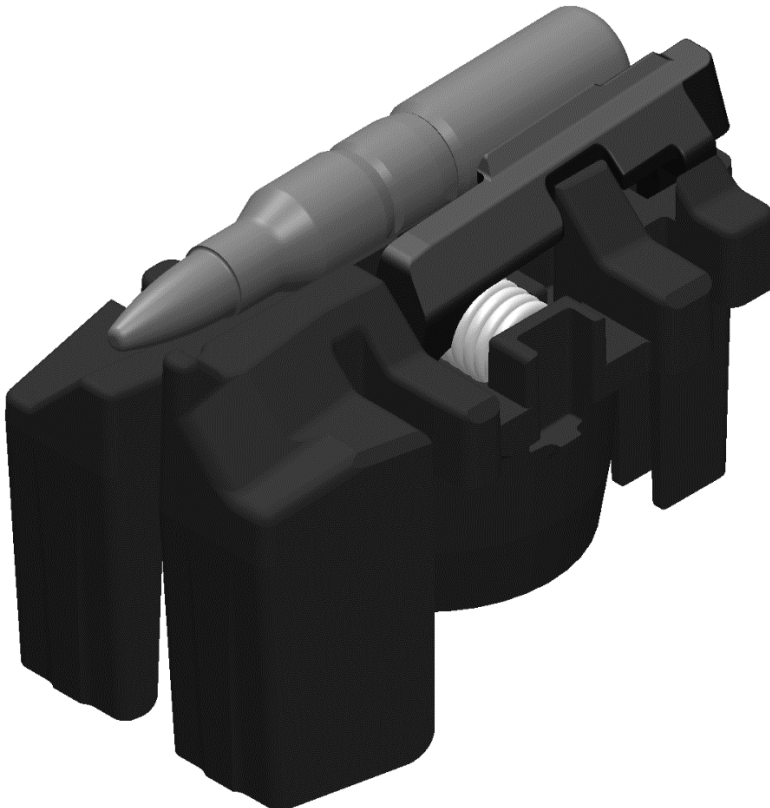


Quattro Magazine Assembly

7. Insert the head QTR0014 onto the tail and apply pressure until the head fully engages the tail and link.



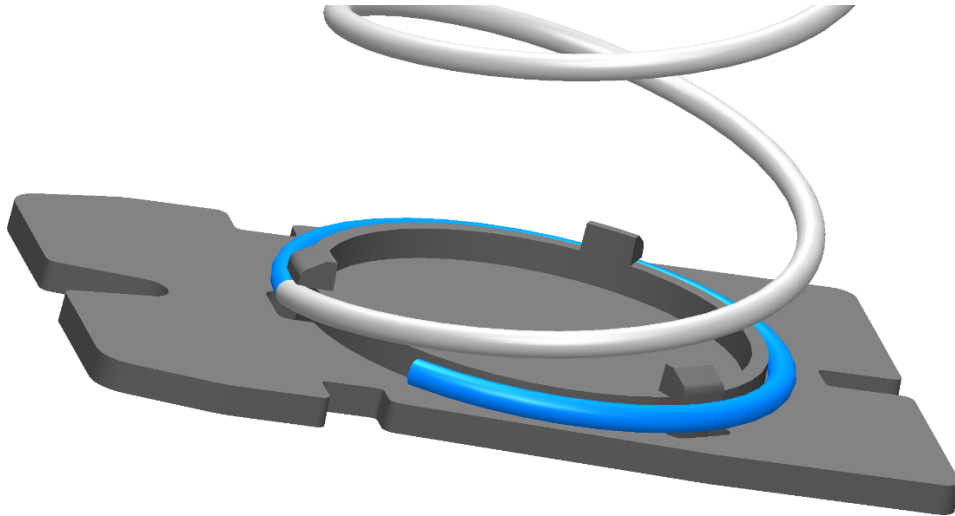
8. Verify that the dummy round is in the proper orientation and that the riser is moving freely.



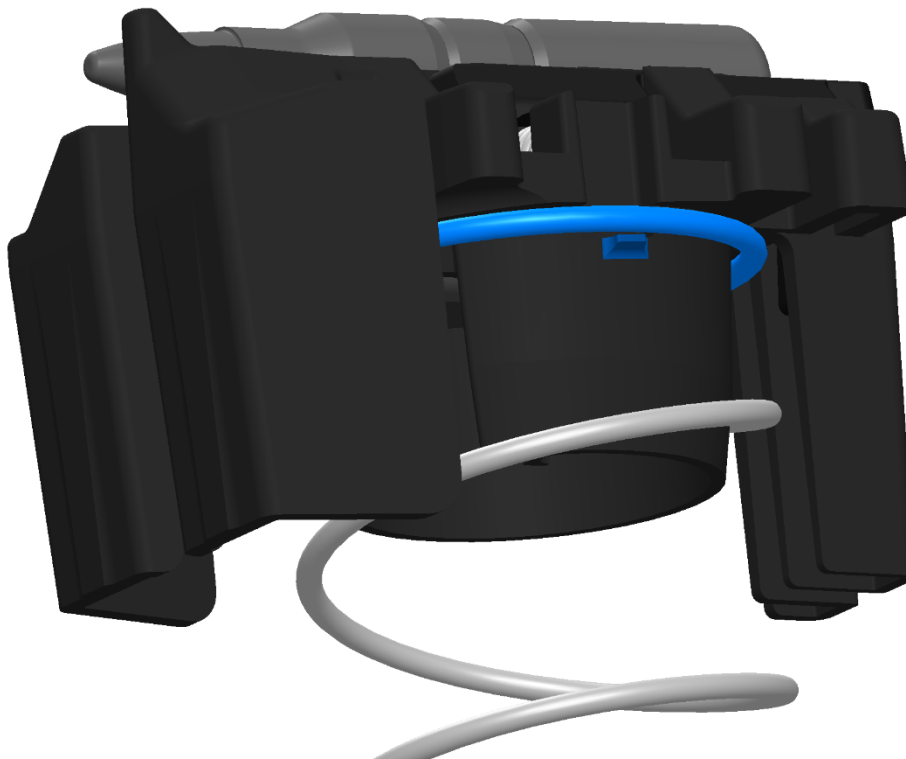
Quattro Magazine Assembly

Quad Magazine Assembly

9. Attach the compression spring QTR0010 to the three clips on the floor plate QTR0009. Rotating the spring helps it engage.

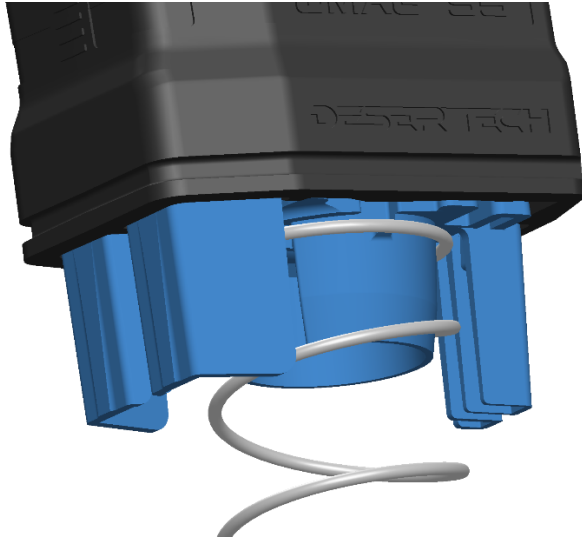


10. Attach other end of the spring to the follower assembly by applying pressure and rotating the spring. Verify that three prongs are engaged.

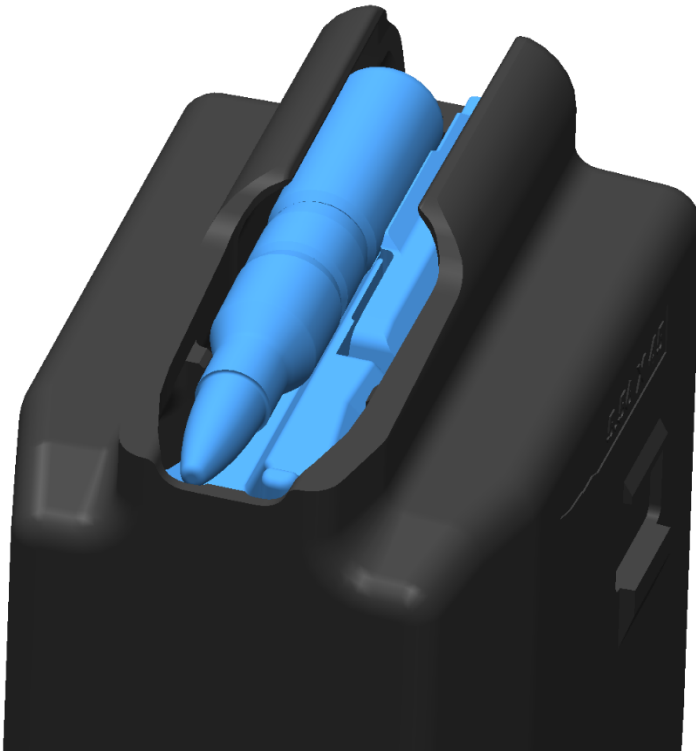


Quattro Magazine Assembly

11. Insert the follower assembly into the magazine body QTR0016. Verify the follower is oriented correctly with the body and that the grooves are in line as shown.



12. Push upward on the floor plate until the follower and dummy round are visible through the mag lips.



Quattro Magazine Assembly

13. Verify that the floor plate is oriented properly and hold the floor plate in the body while inserting the base plate QTR0008 from the front of the body.



Quattro Magazine Assembly

14. Press the base plate all the way until you hear a click and see the flood plate fully engaged.



15. The base plate can be removed by pressing the button in the bottom of the base plate and pulling forward.